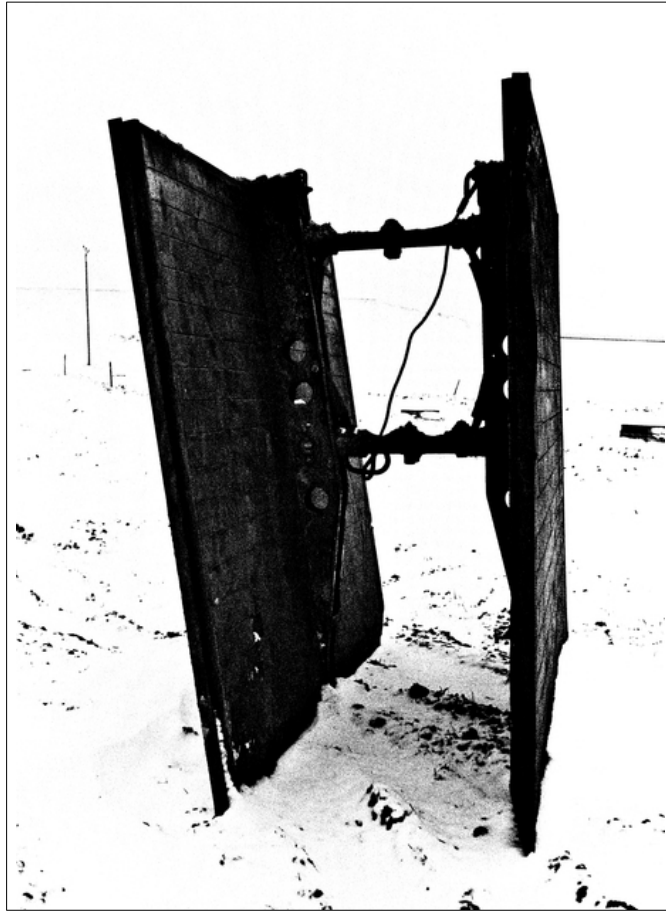


# 013503

## Structure and Snow II




### Picture Description<sup>1)</sup>

A black and white photograph shows a metal structure in a snowy field, likely part of a larger forgotten installation.

### Analysis<sup>1)</sup>

This stark black and white photograph captures a desolate, snow-covered landscape dominated by a peculiar looking industrial relic. Two large, rectangular metal plates, heavily textured and seemingly aged, stand partially open, hinged together by a dark, intricate network of pipes and cables. The harsh contrast accentuates the uneven surfaces and the shadows cast on the snow, emphasizing the object's isolation and its almost sculptural presence against the bleak, empty horizon. The photograph evokes a sense of mystery and abandonment, prompting contemplation about the object's original purpose and its current state of decay.

**Picture Data**

	Type / Size	By	Web Link
Exposure	Analog	Frank Titze	
Developing	Analog	Frank Titze	
Enlarging	—	—	
Scanning	Digital	Frank Titze	
Processing	Digital	Frank Titze	
	Exposure	Processing	Published
Dates	—	03/2025	10/2023
	Width	Height	Bits/Color
Original Size	4528 px	6340 px	16
Ratio ca.	1	1.40	—
Exposure	24x36 mm		
Location	—		
Title (German)	Struktur und Schnee II		

**Remarks**

<sup>1)</sup>Text is AI generated - Reviewed / Corrected