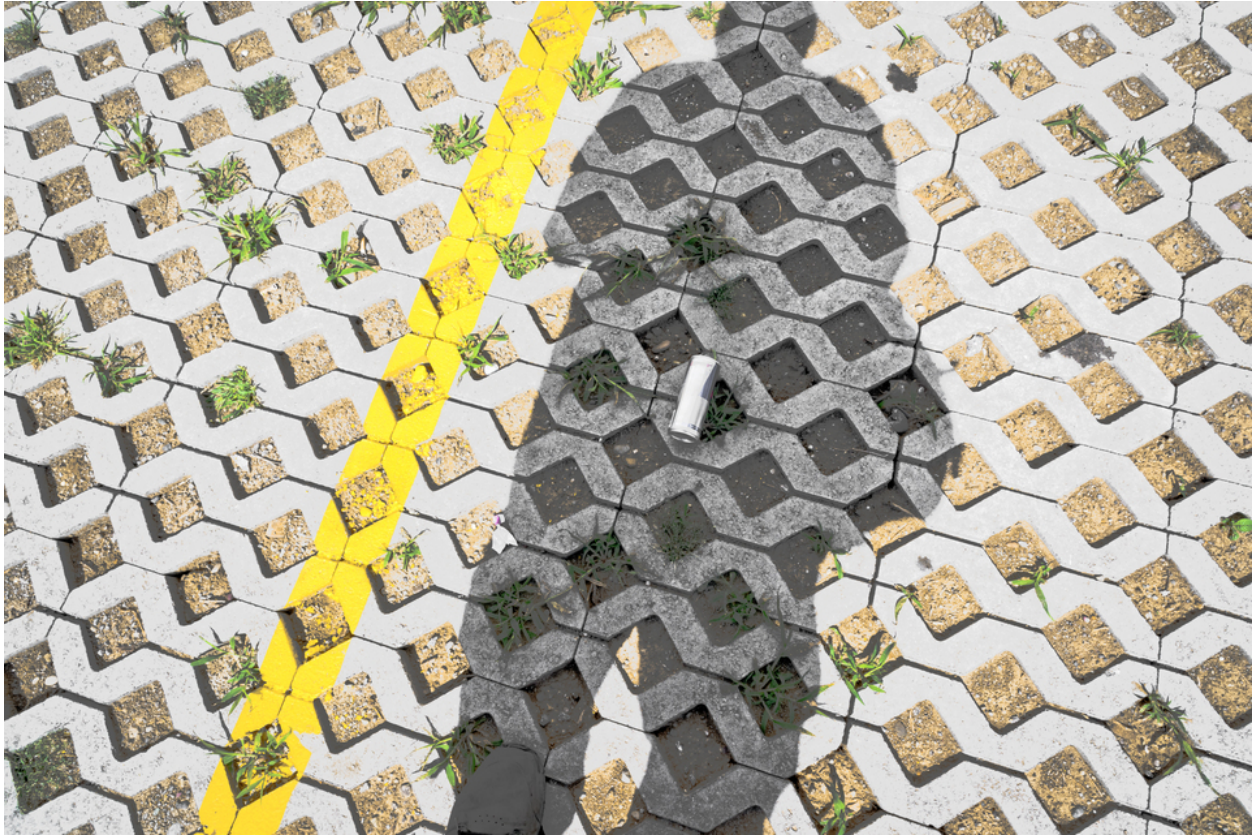


012606

Next to the Street IV




Picture Description¹⁾

A shadow of a person looms over a paved area with grass and a yellow line, accompanied by a discarded container.

Analysis¹⁾

This photograph captures a moment of urban decay and human presence through the shadow of a figure standing on a paved surface. The interlocking concrete blocks, weathered and stained, are punctuated by patches of green weeds sprouting from the gaps, hinting at nature's persistence in reclaiming the built environment. A vibrant yellow line cuts diagonally across the composition, adding a stark contrast to the muted tones of the pavement. The shadow of the person casts a dark silhouette, obscuring details and creating a sense of anonymity, while a discarded white object, possibly a can or bottle, lies within the shadow's embrace, suggesting a narrative of human activity and its environmental impact. The strong sunlight creates deep shadows, emphasizing the textures and patterns of the pavement and adding depth to the overall composition.

Picture Data

	Type / Size	By	Web Link
Exposure	Digital	Frank Titze	
Developing	—	—	
Enlarging	—	—	
Scanning	—	—	
Processing	Digital	Frank Titze	
	Exposure	Processing	Published
Dates	08/2022	03/2023	04/2025
	Width	Height	Bits/Color
Original Size	7360 px	4912 px	16
Ratio ca.	1.50	1	—
Exposure	24x36 mm		
Location	—		
Title (German)	Neben der Straße IV		

Remarks

¹⁾Text is AI generated - Reviewed / Corrected