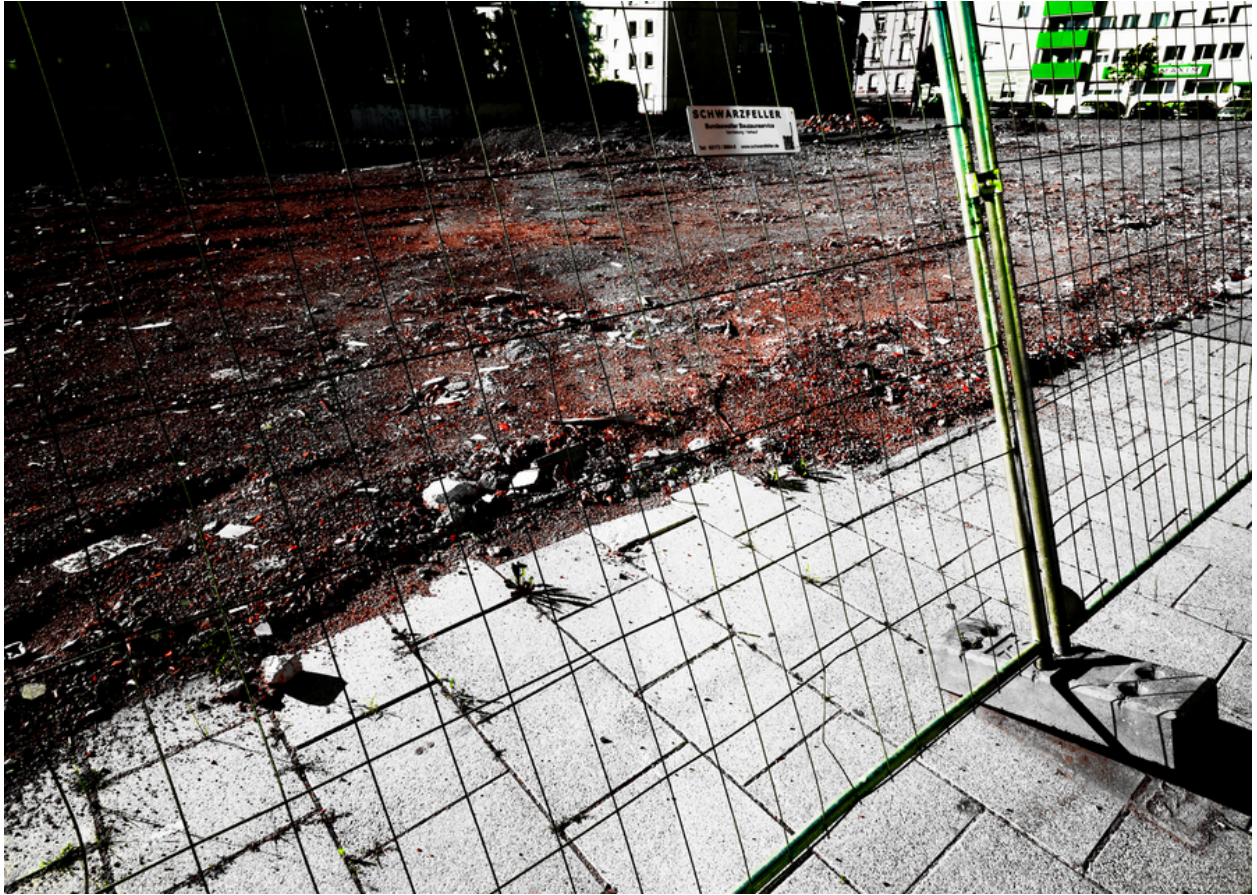


011865

SCHWARZFELLER




Picture Description¹⁾

The photograph captures a construction site secured by a wire fence, with disturbed earth visible behind it and a paved sidewalk in the foreground.

Analysis¹⁾

This photograph captures a construction site cordoned off by a wire fence. The foreground features a concrete sidewalk with a grid pattern, bisected diagonally by the fence. The area behind the fence is a stark contrast, revealing dark, disturbed earth littered with debris and rubble. A sign indicating the construction company is visible in the background, and buildings can be seen further back. The photograph uses strong shadows and light to create a dramatic effect, emphasizing the starkness and disruption of the construction site.

Picture Data

	Type / Size	By	Web Link
Exposure	Digital	Frank Titze	
Developing	—	—	
Enlarging	—	—	
Scanning	—	—	
Processing	Digital	Frank Titze	
	Exposure	Processing	Published
Dates	06/2022	09/2022	09/2024
	Width	Height	Bits/Color
Original Size	6877 px	4912 px	16
Ratio ca.	1.40	1	—
Exposure	24x36 mm		
Location	—		
Title (German)	SCHWARZFELLER		

Remarks

¹⁾Text is AI generated - NOT reviewed and/or corrected