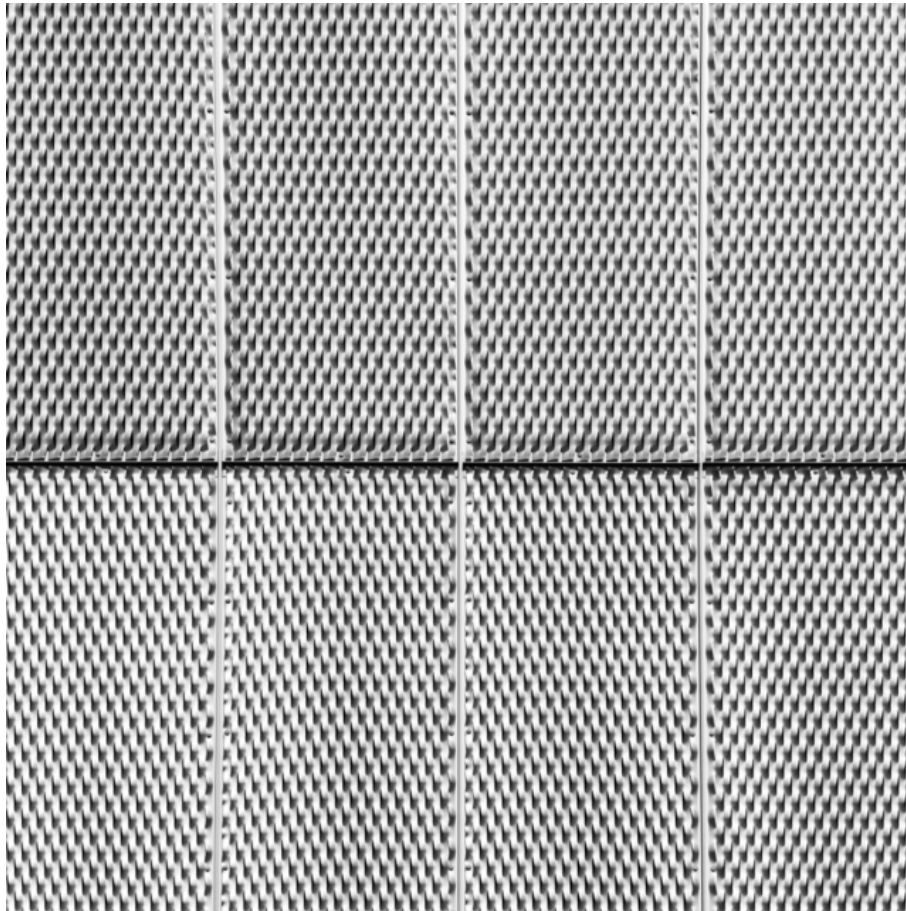


006695

Perforated Steel I




Picture Description¹⁾

A monochromatic close-up shows a pattern of small, textured squares arranged in rows and columns, separated by vertical and horizontal lines, creating a uniform, grid-like appearance.

Analysis¹⁾

This photograph presents a close-up view of a textured metallic surface, likely part of a building's facade. The repeating pattern consists of small, pyramidal or cone-shaped elements arranged in a grid, creating a visually intriguing interplay of light and shadow. The surface is divided into panels, with thin vertical and horizontal seams clearly delineating the separate sections. The high-contrast black and white tones emphasize the geometric nature of the design and the precision of the metalwork, giving it an abstract, architectural quality.

Picture Data

	Type / Size	By	Web Link
Exposure	Digital	Frank Titze	
Developing	—	—	
Enlarging	—	—	
Scanning	—	—	
Processing	Digital	Frank Titze	
	Exposure	Processing	Published
Dates	08/2018	08/2018	03/2019
	Width	Height	Bits/Color
Original Size	4911 px	4911 px	16
Ratio ca.	1	1	—
Exposure	24x36 mm		
Location	—		
Title (German)	Lochstahl I		

Remarks

¹⁾Text is AI generated - NOT reviewed and/or corrected