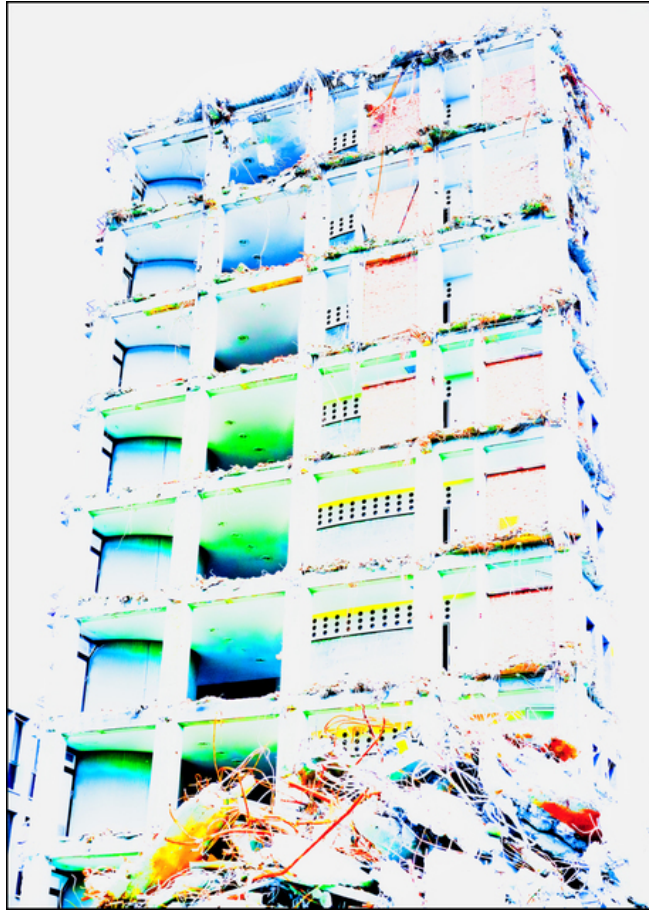


# 005830

Lawyers Temple End III




## Picture Description<sup>1)</sup>

A high-contrast, vibrant photograph of a partially demolished high-rise building, showing remnants of its structure and debris.

## Analysis<sup>1)</sup>

This photograph captures a partially demolished building, its skeletal structure exposed against a stark white background. The photograph is heavily processed with vibrant, unnatural colors that lend an almost surreal quality to the scene. Debris and remnants of the building's interior litter the base, adding to the sense of destruction and decay. The high contrast and saturated colors emphasize the raw, unsettling beauty of urban decay, inviting viewers to contemplate the impermanence of structures and the relentless cycle of creation and destruction.

**Picture Data**

	Type / Size	By	Web Link
Exposure	Digital	Frank Titze	
Developing	—	—	
Enlarging	—	—	
Scanning	—	—	
Processing	Digital	Frank Titze	
	Exposure	Processing	Published
Dates	07/2017	01/2018	04/2018
	Width	Height	Bits/Color
Original Size	4942 px	6907 px	16
Ratio ca.	1	1.40	—
Exposure	24x36 mm		
Location	—		
Title (German)	Rechtsanwalt Tempel Ende III		

**Remarks**

<sup>1)</sup>Text is AI generated - NOT reviewed and/or corrected