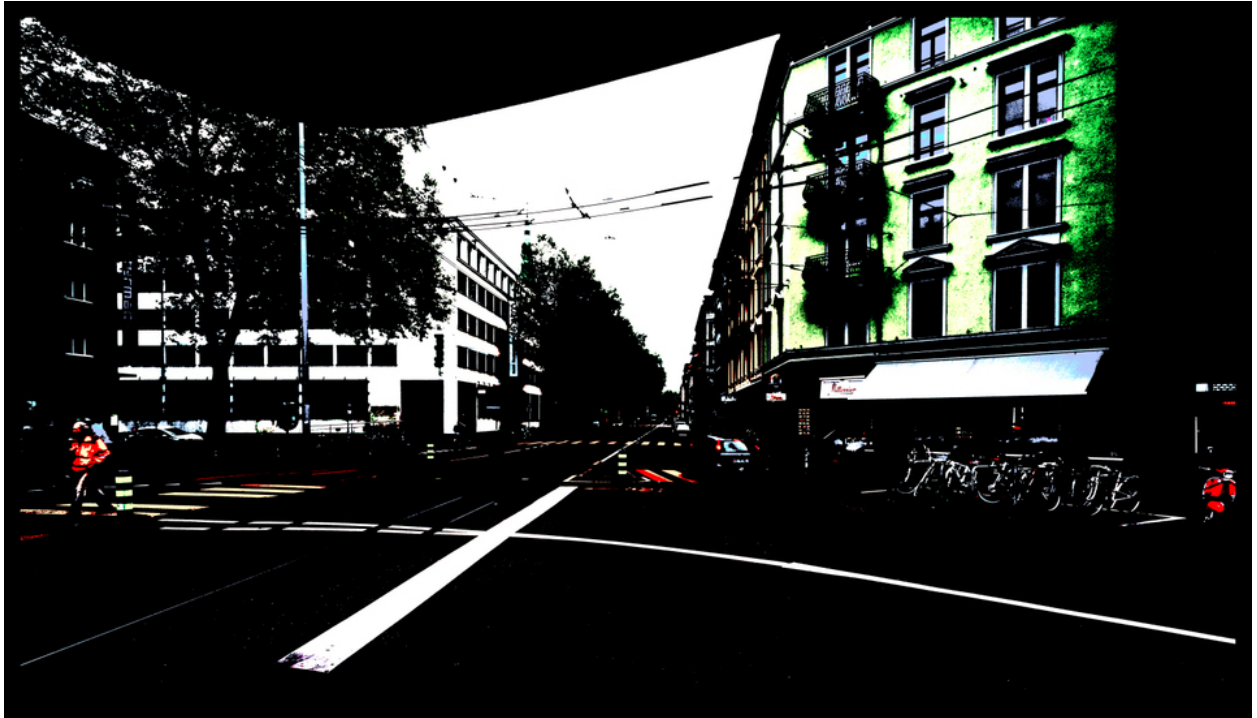


004758

Green House in the Dark




Picture Description¹⁾

A low-angle view of a street scene with buildings on either side, a crosswalk, and people walking, with the light being strong and the contrast very high.

Analysis¹⁾

This striking street scene employs stark contrasts and a distorted perspective to create a disorienting yet compelling visual experience. The composition is divided by the intersection of a prominent white crosswalk, leading the eye towards a vanishing point down the street. On the left, the architectural facade of a building is partially obscured by silhouetted trees, while on the right, a vibrant green building with protruding balconies and bicycles parked in front hints at urban life. The overall photograph is dominated by intense blacks, making the bright whites and vibrant green all the more impactful. The photograph feels both familiar and unsettling, inviting viewers to question their perception of urban landscapes.

Picture Data

	Type / Size	By	Web Link
Exposure	Digital	Frank Titze	
Developing	—	—	
Enlarging	—	—	
Scanning	—	—	
Processing	Digital	Frank Titze	
	Exposure	Processing	Published
Dates	10/2016	10/2016	01/2017
	Width	Height	Bits/Color
Original Size	7560 px	4340 px	16
Ratio ca.	1.74	1	—
Exposure	24x36 mm		
Location	—		
Title (German)	Grünes Haus im Dunkeln		

Remarks

¹⁾Text is AI generated - NOT reviewed and/or corrected