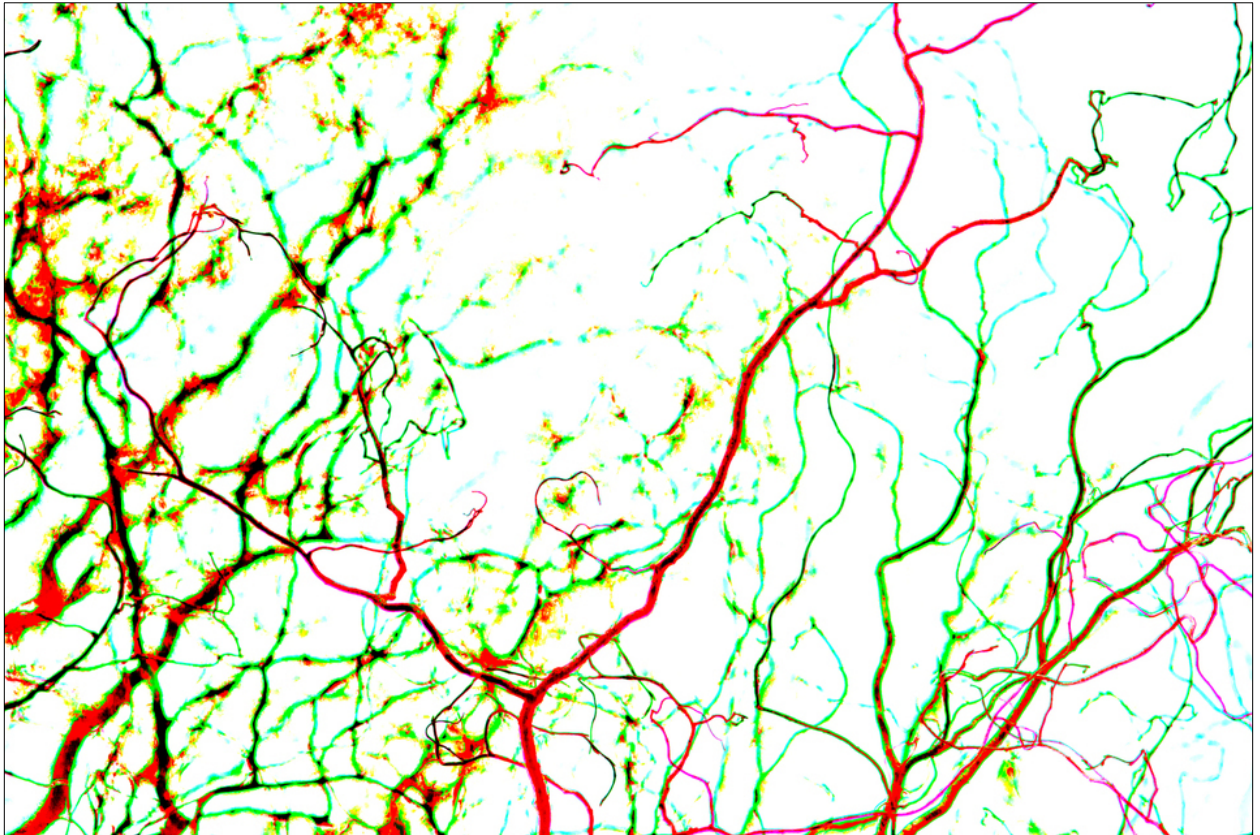


# 004201

Late Color Winter IV




## Picture Description<sup>1)</sup>

A vibrant abstract photograph featuring a network of colorful tree branches against a white background.

## Analysis<sup>1)</sup>

This vibrant, abstract piece presents a network of intertwined branches in a high-contrast, almost otherworldly palette. The branches, rendered in a combination of striking reds, greens, and blacks, snake across a stark white background, creating a sense of depth and complexity. The artist employs a distinct color-separation technique that gives the photograph a unique, almost hallucinatory quality. The intricate details and vivid colors invite the viewer to explore the hidden patterns and rhythms within this seemingly chaotic composition, suggesting a metaphor for the interconnectedness of life and the complex pathways of nature.

**Picture Data**

	Type / Size	By	Web Link
Exposure	Digital	Frank Titze	
Developing	—	—	
Enlarging	—	—	
Scanning	—	—	
Processing	Digital	Frank Titze	
	Exposure	Processing	Published
Dates	03/2016	03/2016	05/2016
	Width	Height	Bits/Color
Original Size	7360 px	4912 px	16
Ratio ca.	1.50	1	—
Exposure	24x36 mm		
Location	—		
Title (German)	Später Farbwinter IV		

**Remarks**

<sup>1)</sup>Text is AI generated - NOT reviewed and/or corrected