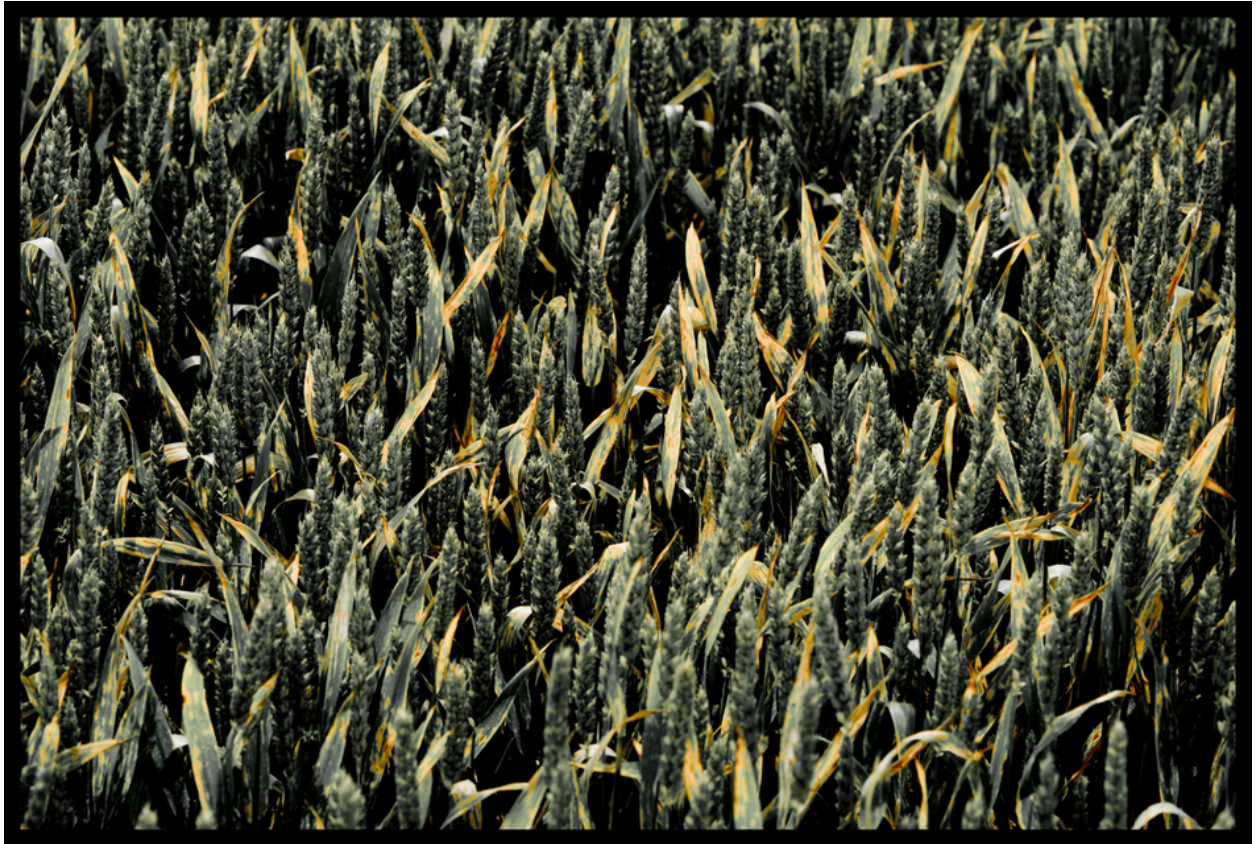


003697

Growing Corn




Picture Description¹⁾

A densely packed field of wheat, mostly green with hints of yellow.

Analysis¹⁾

This photograph presents a dense field of wheat, captured from a high-angle perspective, creating an immersive, almost tactile experience for the viewer. The stalks, rendered in muted greens and grays, are tightly packed, giving a sense of abundance and the power of nature. Flecks of golden yellow, primarily on the tips of the wheat and leaves, add subtle highlights, suggesting the nearing harvest or the effects of sunlight. The overall tonality is subdued, contributing to a somber, yet beautiful, depiction of the agricultural landscape. A black border frames the photograph, enhancing the depth and focusing the gaze on the intricate details of the field.

Picture Data

	Type / Size	By	Web Link
Exposure	Digital	Frank Titze	
Developing	—	—	
Enlarging	—	—	
Scanning	—	—	
Processing	Digital	Frank Titze	
	Exposure	Processing	Published
Dates	06/2015	06/2015	10/2015
	Width	Height	Bits/Color
Original Size	7560 px	5112 px	16
Ratio ca.	1.48	1	—
Exposure	24x36 mm		
Location	—		
Title (German)	Anbau von Mais		

Remarks

¹⁾Text is AI generated - NOT reviewed and/or corrected