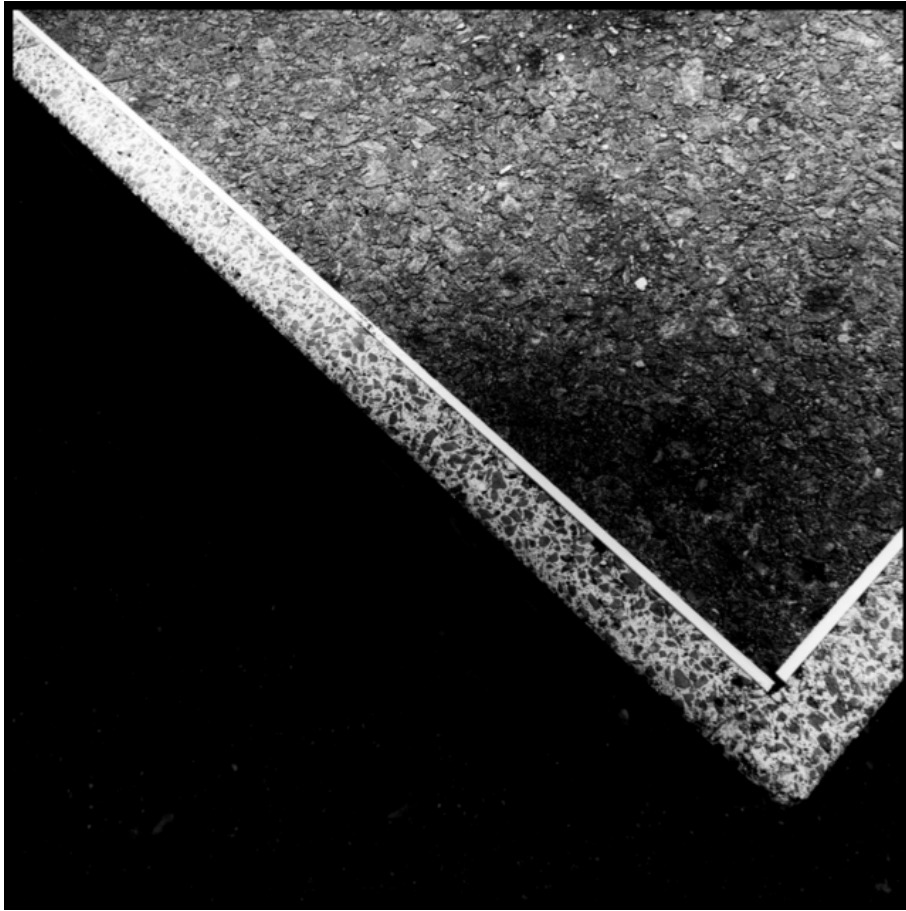


002794

TT III




Picture Description¹⁾

A black and white photograph of a corner where a textured surface meets a smooth, dark area, bordered by a speckled edge.

Analysis¹⁾

This black and white photograph presents a study in textures and geometric forms. A diagonal line, sharply defined by a pale, granular curb or edge, divides the composition. Above the line, a surface of roughly textured asphalt dominates, its granular details captured in stark contrast. Below the line, a void of deep black fills the lower left portion of the photograph, emphasizing the tactile qualities of the upper surface and creating a striking visual tension. The tight framing and minimalist composition invite contemplation on the interplay of light, shadow, and the contrasting textures.

Picture Data

	Type / Size	By	Web Link
Exposure	Digital	Frank Titze	
Developing	—	—	
Enlarging	—	—	
Scanning	—	—	
Processing	Digital	Frank Titze	
	Exposure	Processing	Published
Dates	08/2014	08/2014	12/2014
	Width	Height	Bits/Color
Original Size	5012 px	5012 px	16
Ratio ca.	1	1	—
Exposure	24x36 mm		
Location	—		
Title (German)	TT III		

Remarks

¹⁾Text is AI generated - NOT reviewed and/or corrected