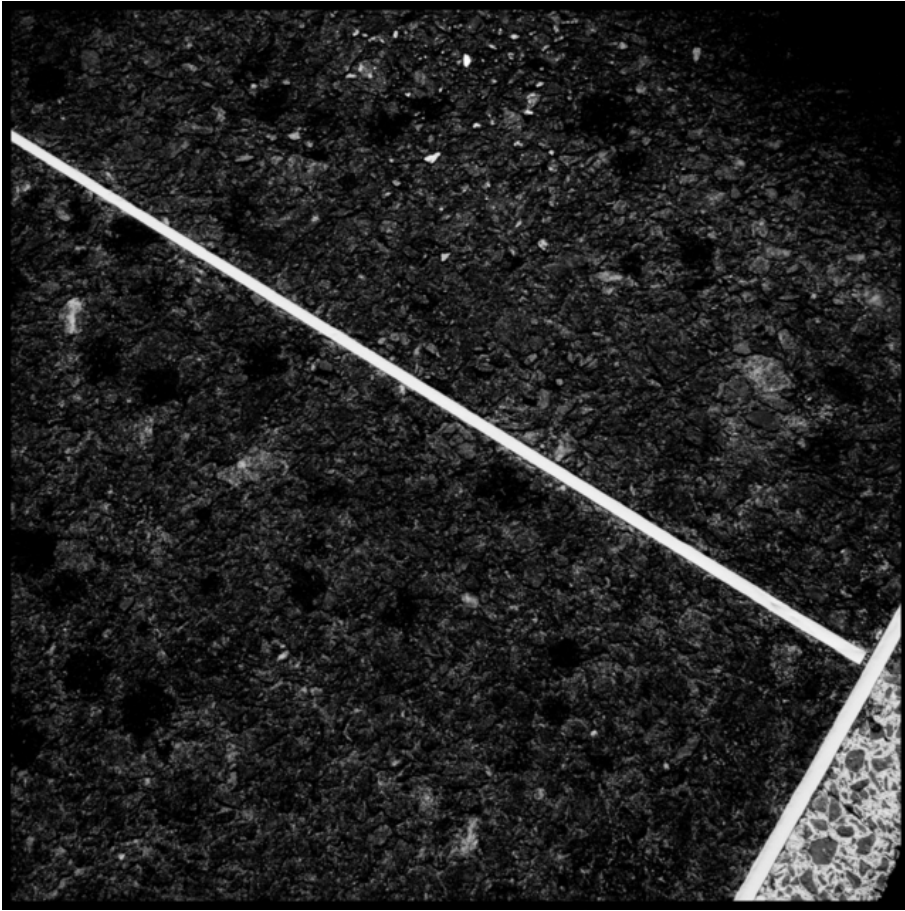


# 002793

TT II




## Picture Description<sup>1)</sup>

A black and white photograph showing a textured asphalt surface with a white line running diagonally across it.

## Analysis<sup>1)</sup>

This black and white photograph presents a stark study in texture and line. The rough, granular surface of what appears to be asphalt dominates the frame, its darkness punctuated by the occasional light fleck. A clean, white line bisects the composition diagonally, creating a strong visual division and leading the eye toward the lower right corner where it intersects with another, perpendicular line. The stark contrast between the organic texture and the geometric precision of the lines creates a sense of tension and invites contemplation on the interplay between the natural and the constructed environments.

**Picture Data**

	Type / Size	By	Web Link
Exposure	Digital	Frank Titze	
Developing	—	—	
Enlarging	—	—	
Scanning	—	—	
Processing	Digital	Frank Titze	
	Exposure	Processing	Published
Dates	08/2014	08/2014	12/2014
	Width	Height	Bits/Color
Original Size	5012 px	5012 px	16
Ratio ca.	1	1	—
Exposure	24x36 mm		
Location	—		
Title (German)	TT II		

**Remarks**

<sup>1)</sup>Text is AI generated - NOT reviewed and/or corrected