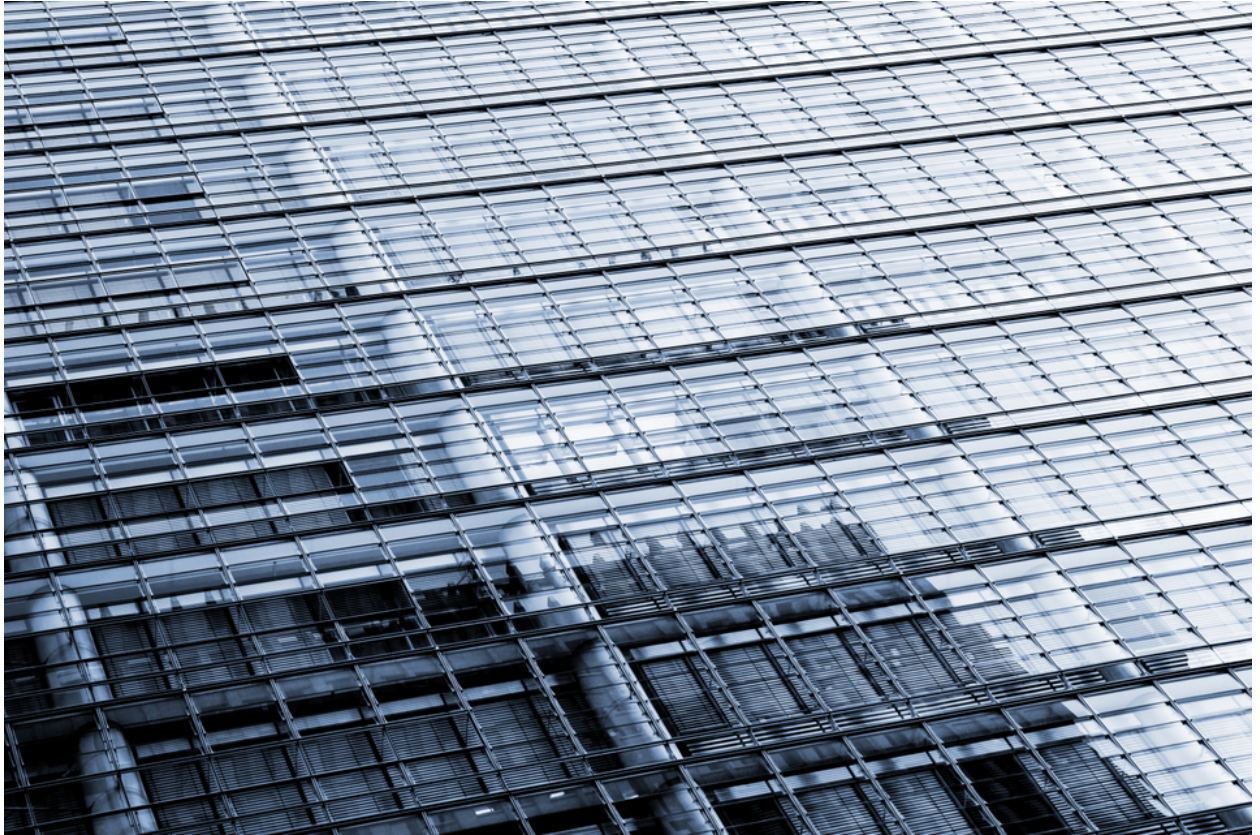


001893

Surface




Picture Description¹⁾

A blue-toned architectural photograph showcasing the facade of a modern building with repetitive window patterns and reflections.

Analysis¹⁾

This photograph captures a section of a modern building facade. The dominant feature is the repetitive pattern of windows and the structural elements that frame them. The composition is dynamic, employing a diagonal perspective that draws the eye across the frame. The building's glass reflects the surrounding environment, creating a layered effect of surface and depth. The monochromatic blue-grey palette adds a cool, architectural feel, emphasizing the geometric precision of the design.

Picture Data

	Type / Size	By	Web Link
Exposure	Digital	Frank Titze	
Developing	—	—	
Enlarging	—	—	
Scanning	—	—	
Processing	Digital	Frank Titze	
	Exposure	Processing	Published
Dates	09/2013	10/2013	01/2014
	Width	Height	Bits/Color
Original Size	7360 px	4912 px	16
Ratio ca.	1.50	1	—
Exposure	24x36 mm		
Location	—		
Title (German)	Oberfläche		

Remarks

¹⁾Text is AI generated - NOT reviewed and/or corrected